

Meeting traceability needs in operating processes

**THINKY Mixer
Vacuum type**

ARV-310PCE

Touch panel

Recipe Management Improved

- ✓ Register up to 20 recipes, each specified by an appropriate name.
- ✓ Real-time display and check of recipe progress and operating status
- ✓ Easy identification of causes of error by clear display of error status with a corresponding explanation



Communication function

Support automatic operation and log report

- ✓ An external terminal for recipe selection and loading as well as operation start and stop available
- ✓ During remote control, external terminal instructions are prioritized and main unit panel operation is disabled.
- ✓ Supports equipment function of reporting progress and operating status every second
- ✓ Sample software for remote operation available free of charge (for Windows 7, 8, and 10)

THINKY CORPORATION

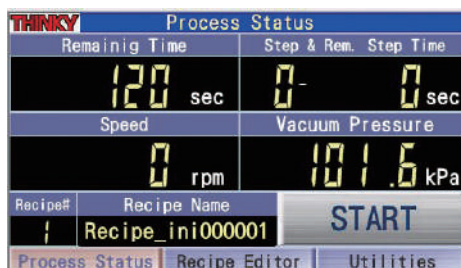
Operation screen of touch panel

① Initial screen



Japanese ⇄ English language switch possible

② Screen of operation control



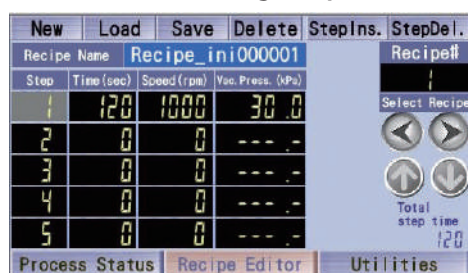
Displays real-time revolution speed and vacuum pressure

③ Screen of utility selection



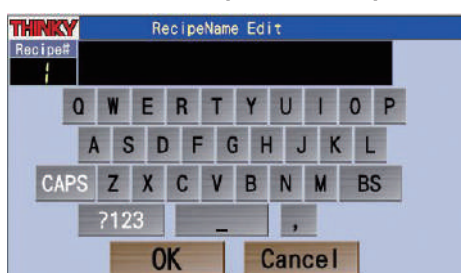
Shows total number of operations and total operation time in a table

④ Screen for editing recipe



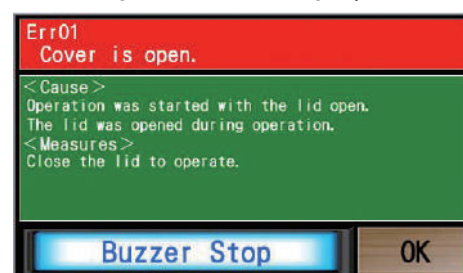
Viewing and editing of all steps in one screen possible

⑤ Screen for recipe-name input



Upper and lower case letters and numerals can be input.

⑥ Example of alarm display



Error details, explanation of cause, and recommended action are displayed together with the error number.

ARV-310PCE : Product Specification

Method	Vacuum type, propellerless, rotation and revolution mixing method	
Range of operation time	From 00 minutes 00 seconds to 30 minutes 00 seconds (The total operation time can be set at maximum 30 minutes in units of 1 second)	
Revolution speed	Maximum 2000 rpm (0 rpm and range from 200 to 2000 rpm in units of 10 rpm)	
Rotation speed	Maximum 1000 rpm (automatically set to be the half of the revolution speed)	
Number of memories	20 memories (five steps can be registered in each)	
Container	300 ml and 150 ml, made of HDPE	
Maximum & minimum quantity processed	Atmospheric pressure	When using 300 ml container: 250 ml / 310 g When using 150 ml container: 120 ml / 310 g
	Vacuum operation	When using 300 ml container: 200 ml / 310 g When using 150 ml container: 100 ml / 310 g

Vacuum chamber	Rotary part vacuum chamber system	
Power supply	Voltage	Single-phase AC 230 V ± 10%, 50 kHz / 60 kHz
	Power consumption	During standby: about 50 VA During operation: Maximum 1200 VA (except at startup)
Operation environment	- 10 to 35°C, 35 to 85% RH (no condensation) - Altitude lower than 2000 m	
Main body dimensions	450 mm (H) × 555 mm (W) × 645 mm (D)	
Body weight	About 90 kg	
Switch / display unit	Touch panel (4.3 inches)	
Communication function (RS232C)	Data collection function (Traceability function) Operation start and stop, recipe editing and saving, using an external terminal	
Others	Real-time display of rpm during operation, function of setting recipe name	

THINKY CORPORATION

Headquarters: 2-16-2 Sotokanda, Chiyoda-ku, Tokyo 101-0021
Phone : +81-3-5207-2713 Fax : +81-3-5289-3281

THINKY USA Inc. : 23151 Verdugo Drive, Suite 112 Laguna Hills, CA92653, USA

THINKY CHINA: East building, HaiAn Kafunuo Mansion, Shennan road,
Qianhai road, Nanshan district, Shenzhen

<https://www.thinkymixer.com/en-gl/>

Sales agent